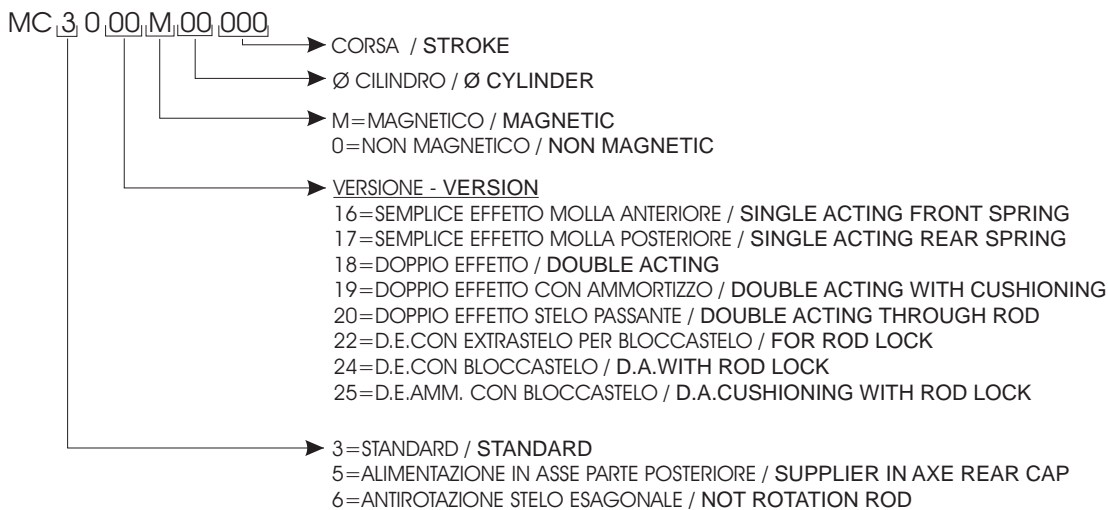




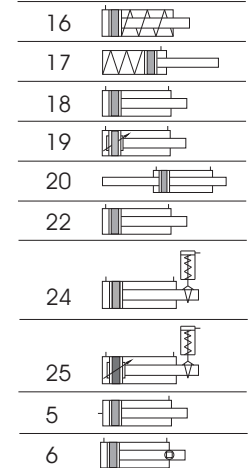
I microcilindri AIRWORK sono realizzati secondo le normative europee DIN/ISO 6432 ed hanno alesaggi compresi tra 8 e 25 mm. Le testate sono fissate alla camicia mediante rullatura. Sono realizzabili in differenti versioni, semplice / doppio effetto, magnetici, Ammortizzati. Sono inoltre disponibili i relativi accessori di fissaggio ed esecuzioni speciali a disegno.

AIRWORK microcylinders ISO 6432 series MC are manufactured following European norms DIN/ISO 6432 and have bores comprised between 8 and 25 mm. The cap heads are fixed to the tube through a process of rolling. They are available in different versions, single / double effect, magnetic, cushioned. A complete range of fixing accessories is available, and the production of special cylinders on customer's drawing is also possible.

CHIAVE DI CODIFICA / KEY TO TYPE NUMBER



VERSIONE - VERSION



CORSE STANDARD - STANDARD STROKES

Doppio effetto - Double acting

Ø8	mm10-25-50-80-100-125
Ø10	mm10-25-50-80-100-125
Ø12	mm10-25-50-80-100-125-160-200
Ø16	mm10-25-50-80-100-125-160-200-250
Ø20	mm10-25-50-80-100-125-160-200-250-320
Ø25	mm10-25-50-80-100-125-160-200-250-320

Ammortizzato - Cushioning

Ø16	mm10-25-50-80-100-125-160-200-250
Ø20	mm10-25-50-80-100-125-160-200-250-320
Ø25	mm10-25-50-80-100-125-160-200-250-320

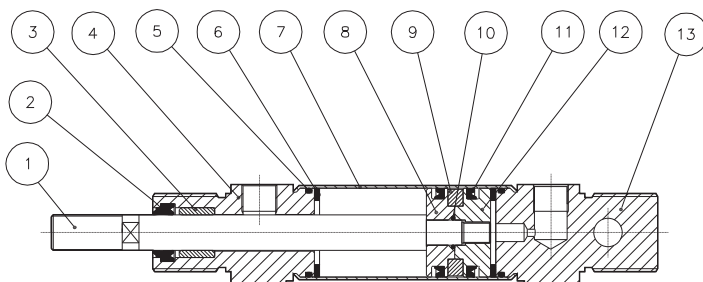
Semplice effetto - Single acting

Ø8	mm10-25-50
Ø10	mm10-25-50
Ø12	mm10-25-50
Ø16	mm10-25-50
Ø20	mm10-25-50
Ø25	mm10-25-50

DATI TECNICI / TECHNICAL DATA

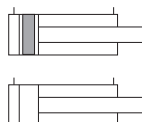
Fluido - Fluid	Aria con o senza lubrificazione - Lubricated or non lubricated air
Temperatura di esercizio - Operating temperature range	-20C° / +80C°
Pressione massima di esercizio - Max operating pressure	10 bar
Forze sviluppate - Force	pag.dati tecnici / technical informations page
Consumo aria - Air consumption	pag.dati tecnici / technical informations page

COMPONENTI / COMPONENTS

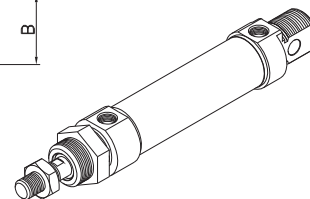
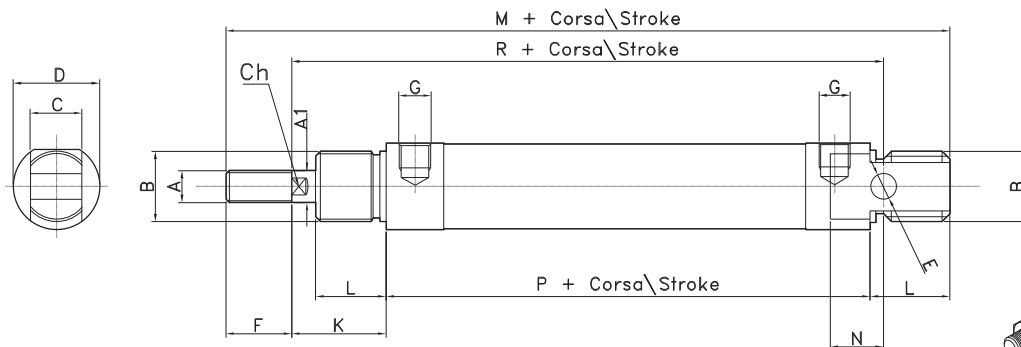
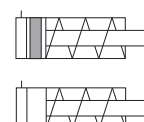


pos.	descrizione / description	materiale / material
1	stelo / rod	acciaio inox 303 / stainless steel AISI 303
2	guarnizione stelo / rod seal	poliuretano / polyurethane
3	bussola guida / guide bush	bronzo / bronze
4	testata anteriore / front cap	alluminio / aluminium
5	o-ring	NBR
6	paracolpo / bumper	neoprene
7	tubo / tube	acciaio inox 304 / stainless steel AISI 304
8	pistone / piston	ot 58
9	magnete / magnet	plastroferrite
10	o-ring	NBR
11	guarnizione pist. / seal piston	poliuretano / polyurethane
12	pistone / piston	ot 58
13	testata posteriore / rear cap	alluminio / aluminium

DOPPIO EFFETTO
DOUBLE ACTING

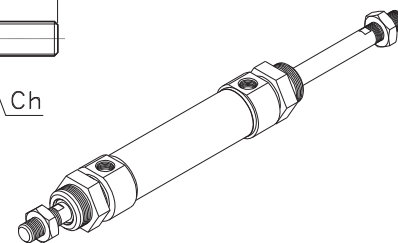
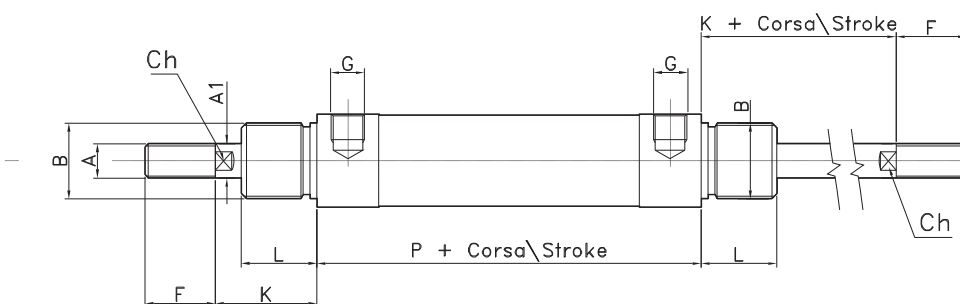
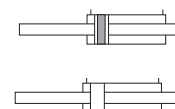


SEMPLICE EFFETTO
SINGLE ACTING



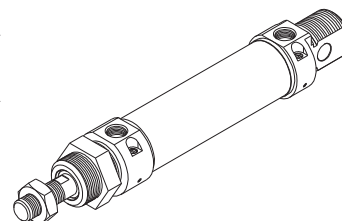
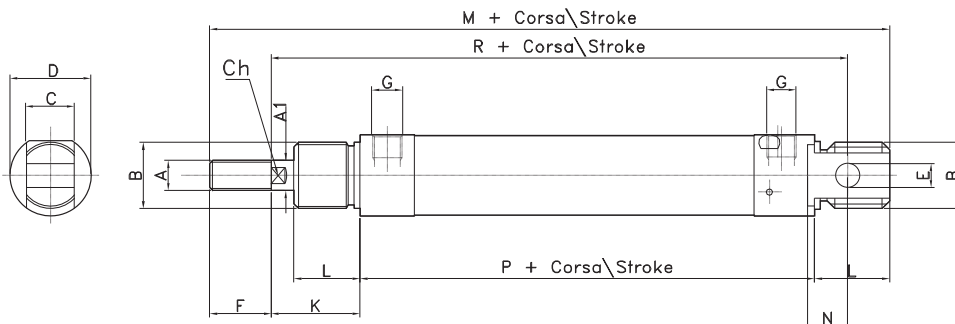
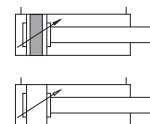
Ø	A	A1	B	C	D	E	F	G	K	L	M	N	P	R	CH
8	M4	4	M12x1.25	8	16	4	12	M5	16	12	86	6	46	64	-
10	M4	4	M12x1.25	8	16	4	12	M5	16	12	86	6	46	64	-
12	M6	6	M16x1.5	12	19	6	16	M5	22	18	104	9	48	75	5
16	M6	6	M16x1.5	12	19	6	16	M5	22	18	109	9	53	82	5
20	M8	8	M22x1.5	16	27	8	20	1/8 G	24	20	131	12	67	95	7
25	M10x1.25	10	M22x1.5	16	30	8	22	1/8 G	28	22	140	12	68	104	9

STELO PASSANTE
THROUGH ROD



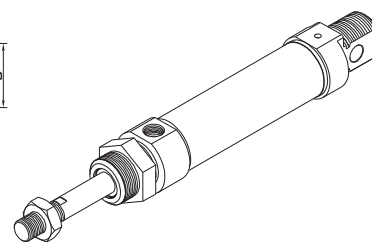
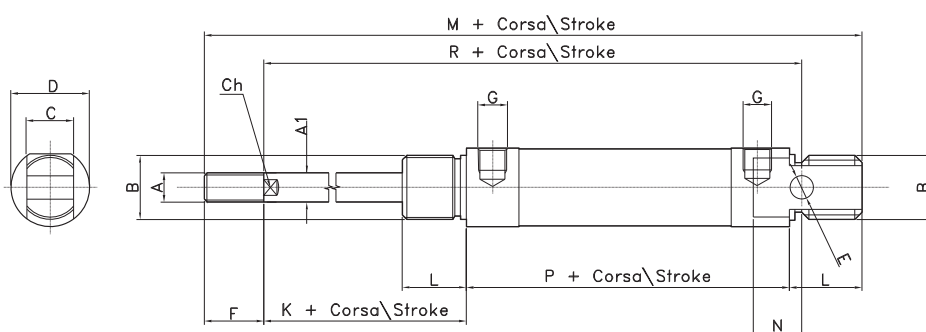
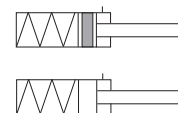
Ø	A	A1	B	D	F	K	L	P	G	CH
8	M4	4	M12x1.25	16	12	16	12	46	M5	-
10	M4	4	M12x1.25	16	12	16	12	46	M5	-
12	M6	6	M16x1.5	19	16	22	18	48	M5	5
16	M6	6	M16x1.5	19	16	22	18	53	M5	5
20	M8	8	M22x1.5	27	20	24	20	67	1/8 G	7
25	M10x1.25	10	M22x1.5	30	22	28	22	68	1/8 G	9

AMMORTIZZATO
CUSHIONING



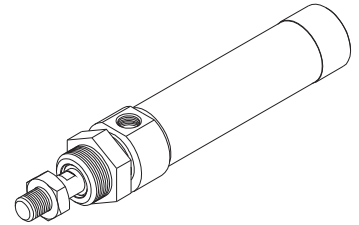
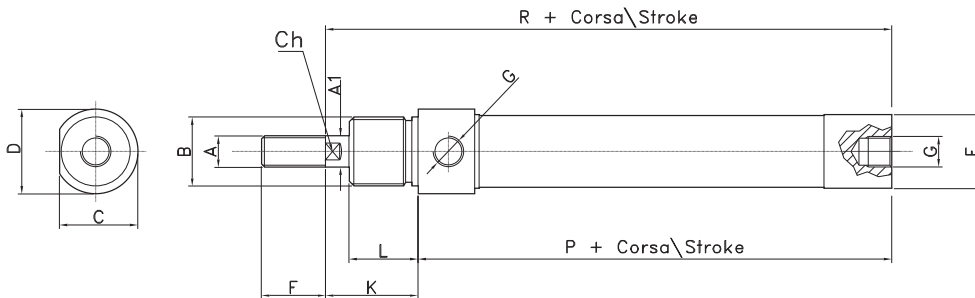
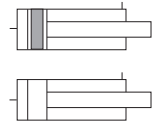
Ø	A	A1	B	C	D	E	F	G	K	L	M	N	P	R	CH
16	M6	6	M16x1.5	12	21	6	16	M5	22	18	109	9	53	82	5
20	M8	8	M22x1.5	16	27	8	20	1/8 G	24	20	131	12	67	95	7
25	M10x1.25	10	M22x1.5	16	30	8	22	1/8 G	28	22	140	12	68	104	9

SEMPLICE EFFETTO
SINGLE ACTING



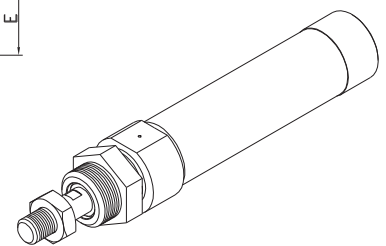
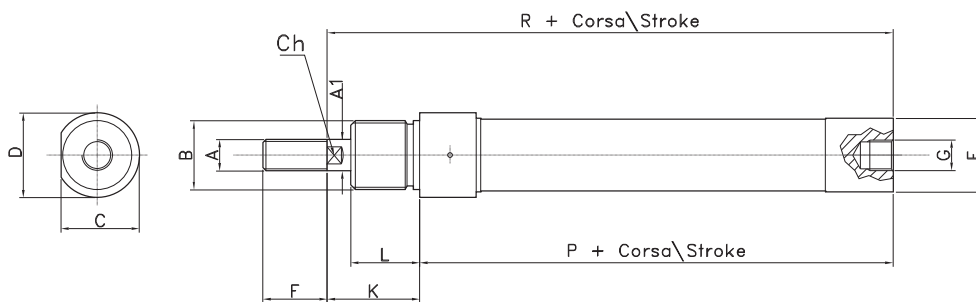
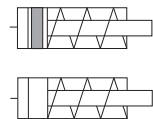
Ø	A	A1	B	C	D	E	F	G	K	L	M	N	P	R	CH
8	M4	4	M12x1.25	8	16	4	12	M5	16	12	106	6	66	84	/
10	M4	4	M12x1.25	8	16	4	12	M5	16	12	113	6	73	91	/
12	M6	6	M16x1.5	12	19	6	16	M5	22	18	128	9	72	99	5
16	M6	6	M16x1.5	12	19	6	16	M5	22	18	134.5	9	78.5	107.5	5
20	M8	8	M22x1.5	16	27	8	20	1/8 G	24	20	154	12	90	118	7
25	M10x1.25	10	M22x1.5	16	30	8	22	1/8 G	28	22	166	12	94	130	9

DOPPIO EFFETTO ALIMENTAZIONE IN ASSE PARTE POSTERIORE
DOUBLE ACTING SUPPLIER IN AXE REAR CAP



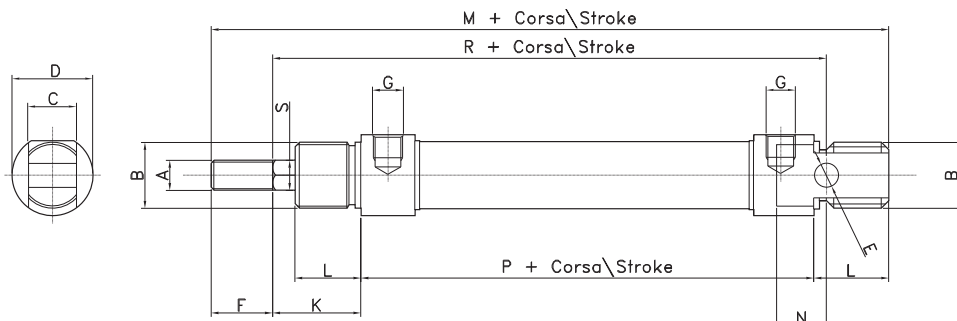
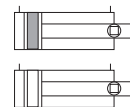
Ø	A	A1	B	C	D	E	F	G	K	L	P	R	CH
16	M6	6	M16x1.5	18	19	17.2	16	M5	22	18	52	74	5
20	M8	8	M22x1.5	25.5	27	22.2	20	1/8 G	24	20	65	89	7
25	M10x1.25	10	M22x1.5	28.5	30	27	22	1/8 G	28	22	66	94	9

SEMPLICE EFFETTO ALIMENTAZIONE IN ASSE PARTE POSTERIORE
SINGLE ACTING SUPPLIER IN AXE REAR CAP

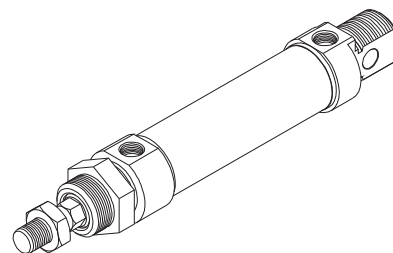


Ø	A	A1	B	C	D	F	G	K	L	P	R	CH
16	M6	6	M16x1.5	18	19	16	M5	22	18	52	74	5
20	M8	8	M22x1.5	25.5	27	20	1/8 G	24	20	65	89	7
25	M10x1.25	10	M22x1.5	28.5	30	22	1/8 G	28	22	66	94	9

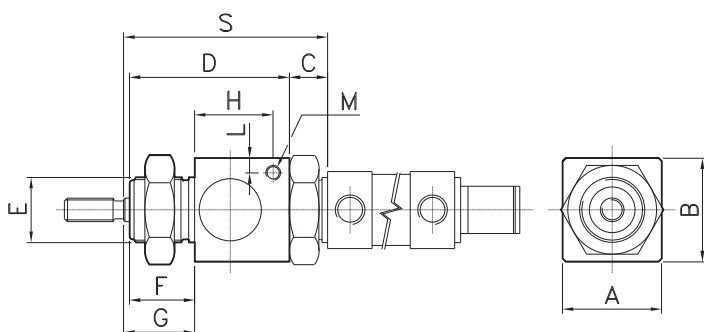
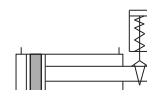
ANTIROTAZIONE STELO ESAGONALE
NOT ROTATION ROD



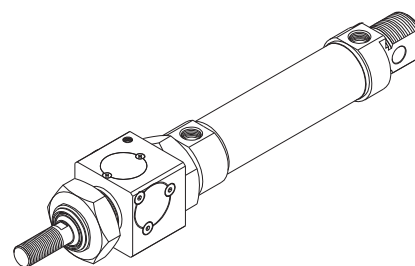
Ø	A	B	C	D	E	F	G	K	L	M	N	P	R	S
16	M6	M16x1.5	12	19	6	16	M5	22	18	109	9	53	82	6
20	M8	M22x1.5	16	27	8	20	1/8 G	24	20	131	12	67	95	8
25	M10x1.25	M22x1.5	16	30	8	22	1/8 G	28	22	140	12	68	104	10



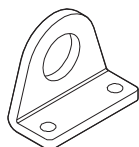
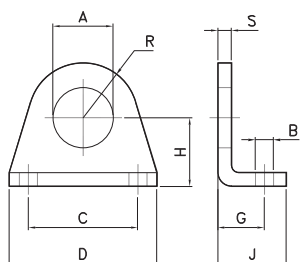
DOPPIO EFFETTO CON BLOCCASTELO
DOUBLE ACTING WITH ROD LOCK



Ø	A	B	C	D	E	F	G	H	L	M	S	T	Peso in Kg. weight in Kg.
20	34	35	13	54	M22x1.5	22	26	27	5	M5	71	47	0.190
25	34	35	13	54	M22x1.5	22	28	27	5	M5	73	45	0.190



Materiale: Acciaio
Material: Steel

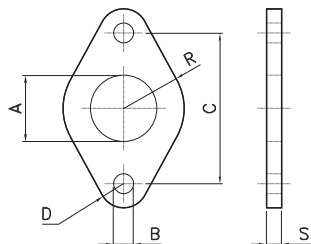


PIEDINO
PEDESTAL

CODE	Ø
AR415508	8-10
AR415512	12-16
AR415520	20-25

Ø	A	B	C	D	G	H	J	R	S	Peso (g)
8-10	12	4.5	25	35	11	16	16	10	3	20
12-16	16	5.5	32	42	14	20	20	12.5	4	40
20-25	22	6.6	40	54	17	25	25	20	5	90

Materiale: Acciaio
Material: Steel

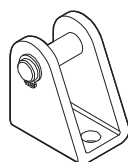
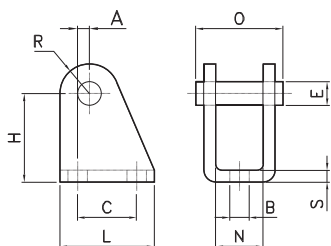


FLANGIA
FLANGE

CODE	Ø
AR415708	8-10
AR415712	12-16
AR415720	20-25

Ø	A	B	C	D	R	S	Peso (g)
8-10	12	4.5	30	5	11	3	12
12-16	16	5.5	40	6	15	4	26
20-25	22	6.6	50	8	20	5	50

Materiale: Acciaio
Material: Steel

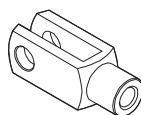
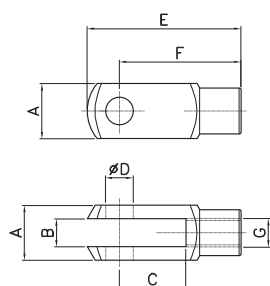


CERNIERA FEMMINA
FEMALE HINGE

CODE	Ø
AR415408	8-10
AR415412	12-16
AR415420	20-25

Ø	B	E	C	H	L	N	O	R	S	Peso (g)
8-10	4.5	4	12.5	24	20	8.1	17	5	2.5	20
12-16	5.5	6	15	27	25	12.1	23	7	3	36
20-25	6.6	8	20	30	32	16.1	29.5	10	4	78

Materiale: Acciaio
Material: Steel

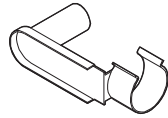
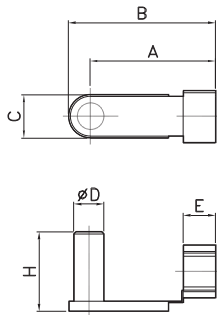


FORCELLA
YOKE

CODE	Ø
AR40670	8-10
AR40671	12-16
AR40672	20
AR40673	25

Ø	A	B	C	D	E	F	G	Peso (g)
8-10	8	4	8	4	21	16	M4	5
12-16	12	6	12	6	31	24	M6	14
20	16	8	16	8	42	32	M8	35
25	20	10	20	10	52	40	M10x1.25	72

Materiale: Acciaio
Material: Steel

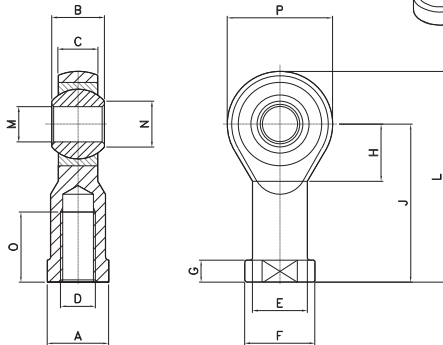


CLIPS PER FORCELLA
CLIPS FOR YOKE

CODE	Ø
AR40680	8-10
AR40681	12-16
AR40682	20
AR40683	25

Ø	A	B	C	D	E	H	Peso (g)
8-10	15.5	19	7	4	4.5	11	2
12-16	22.5	28	10	6	6.5	16	5
20	30.5	37	12.5	8	8	22	11
25	38	46	14.5	10	10	26	19

Materiale: Acciaio
Material: Steel

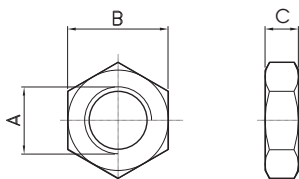


TESTA A SNODO
ROD ENDS

CODE	Ø
AR40655	8-10
AR40656	12-16
AR40657	20
AR40660	25

Ø	A	B	C	D	E	F	G	H	J	L	M	N	O	P
8-10	9	8	6	M4	9	11	4	10	27	36	5	7.7	10	18
12-16	11	9	6.75	M6	10	13	5	11	30	40	6	8.9	12	20
20	14	12	9	M8	12.5	16	5	13	36	48	8	10.4	16	24
25	17	14	10.5	M10x1.25	15	19	6.5	15	43	57	10	12.9	20	28

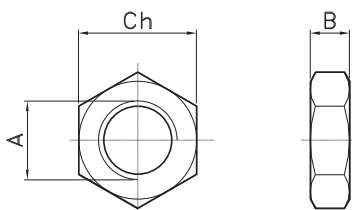
Materiale: Acciaio
Material: Steel



DADO PER STELO
NUT FOR ROD

CODE	Ø	A	B	C
DAN4	8-10	M4	7	3
DAN6	12-16	M6	10	5
DAN8	20	M8	13	6.5
DAN10X1,25	25	M10X1,25	17	8

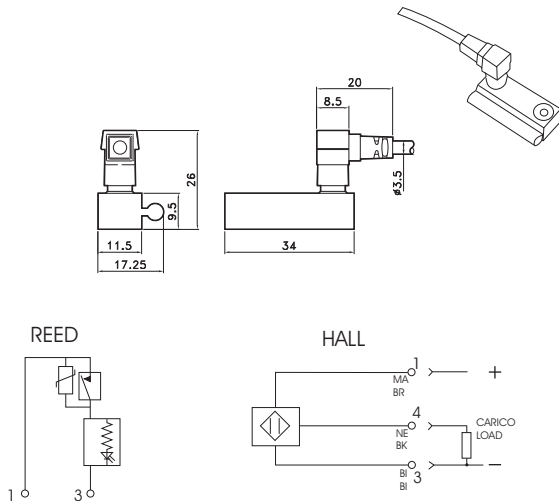
Materiale: Acciaio
Material: Steel



DADO PER TESTATA
NUT FOR CAP

CODE	Ø
DAD12X1,25	8-10
DAD16X1,25	12-16
DAD22X1,5	20-25

Ø	A	B	Ch	Peso (g)
8-10	M12x1.25	7	19	12
12-16	M16x1.5	8	24	20
20-25	M22x1.5	10	32	35

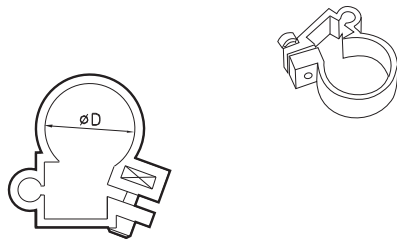


SENSORE UNIVERSALE
UNIVERSAL SWITCH

CODE	
AR4024110	REED 2 FILI CON CONN. / REED 2 WIRES WITH CONN.
AR4024120	HALL 3 FILI CON CONN. / HALL 3 WIRES WITH CONN.

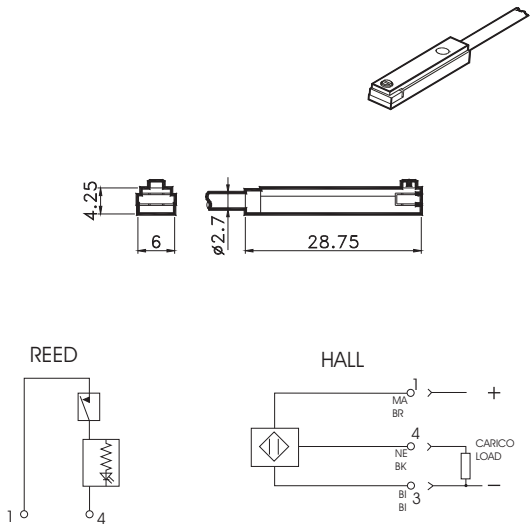
DATI TECNICI / TECHNICAL DATA

Grado di protezione / Protection class	IP 67 EN 60529
Temp. di impiego / Working temp.	-20C° + 85C°
Materiale custodia / Housing material	PA
Tensione in DC / Tension in DC	Reed 3-230V / Hall 6-30V
Tensione in AC / Tension in AC	Reed 3-230V
Corrente a 25 C° / Current at 25 C°	Reed 0,20A / Hall 0,20A
Tempo inserzione / On time	Reed 0,5mS / Hall 0,8 uS
Tempo disinserzione / Off time	Reed 0,1mS / Hall 0,3 uS



ADATTATORE SENSORE UNIVERSALE
ADAPTOR FOR UNIVERSAL SWITCH

CODE	\varnothing	D
AR4025008	8	12
AR4025010	10	14
AR4025012	12	16
AR4025016	16	20
AR4025020	20	24
AR4025025	25	29



SENSORE A T
"T" SWITCH

CODE	
AR4023010	REED 2 FILI (MT.2,5) / REED WITH 2 WIRES (MT.2,5)
AR4023020	HALL 3 FILI (MT.2,5) / HALL WITH 3 WIRES (MT.2,5)
AR4023110	REED 2 FILI + M8 (CM 30) / REED WITH 2 WIRES + M8 CONN.
AR4023120	HALL 3 FILI + M8 (CM 30) / HALL WITH 3 WIRES + M8 CONN.

DATI TECNICI / TECHNICAL DATA

Grado di protezione / Protection class	IP 67 EN 60529
Temp. di impiego / Working temp.	-20C° + 85C°
Materiale custodia / Housing material	PA
Tensione in DC / Tension in DC	Reed 3-30V / Hall 6-30V
Tensione in AC / Tension in AC	Reed 3-30V
Corrente a 25 C° / Current at 25 C°	Reed 0,20A / Hall 0,20A
Tempo inserzione / On time	Reed 0,5mS / Hall 0,8 uS
Tempo disinserzione / Off time	Reed 0,1mS / Hall 0,3 uS



ADATTATORE SENSORE A T
ADAPTOR FOR T SWITCH

CODE	\varnothing
AR4199008	8
AR4199010	10
AR4199012	12
AR4199016	16
AR4199020	20
AR4199025	25