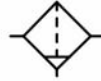


## FILTRO • FILTER • FILTRE



**SIMBOLO PNEUMATICO  
PNEUMATIC SYMBOL  
SYMBÔLE PNEUMATIQUE**



**CODICE ORDINE  
ORDER CODE  
CODE COMMANDE**

Mod.	Filetto Thread • Filetage
FM	1/8
FM	1/4
FM	3/8
FM	1/2
FM	3/4
FM	1"

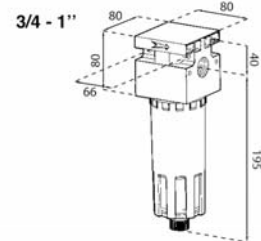
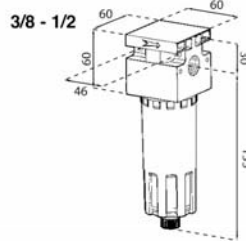
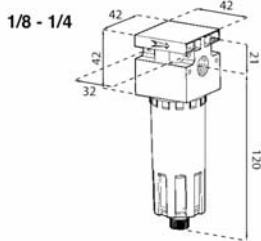
**DESCRIZIONE  
DESCRIPTION • DESCRIPTION**

Il filtro consente di filtrare l'aria da particelle solide e liquide salvaguardando il funzionamento e la durata dei componenti pneumatici.

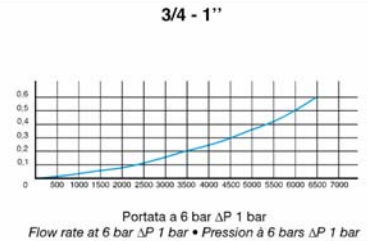
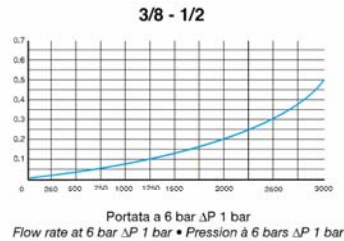
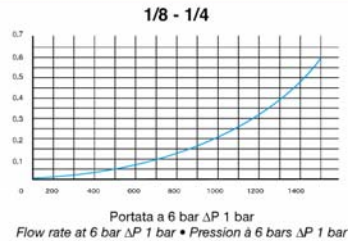
The filter enables the air to be filtered of solid and liquid particles, safeguarding the operation and the life of the pneumatic components.

Le filtre permet de filtrer les particules solides et liquides afin de préserver le fonctionnement et la durée de vie des composants pneumatiques.

### DIMENSIONI • SIZE • DIMENSION



### DIAGRAMMA DI PORTATA CON PRESSIONE A 6 BAR • FLOW RATE DIAGRAM AT 6 BAR



### DATI TECNICI • TECHNICAL DATA • CARACTÉRISTIQUES TECHNIQUES

	1/8 - 1/4	3/8 - 1/2	3/4 - 1"
Peso • Weight • Poids	0,4 Kg	0,9 Kg	1,9 Kg
Viti di fissaggio a parete • Wall fixing screws • Vis de fixation au mur	M4x40	M4x50	M6x75
Capacità tazza cm <sup>3</sup> • Bowl capacity cm <sup>3</sup> • Capacité godet cm <sup>3</sup>	20	60	100
Scarico condensa Condensate drain Purge des condensats	manuale/semiautomatico • manual/semiautomatic • manuelle/semiautomatique A richiesta scarico condensa automatico (accessori mod. SA) By request automatic drain system (accessories mod. SA) Sur demande purge des condensats automatique (accessoire mod.SA)		
Pressione max di ingresso • Maximum inlet pressure • Pression maximale d'entrée	bar 18 - psi 261 - kPa 1800 - MPa 1,8		
Pressione max con scarico di condensa automatico Maximum inlet pressure with automatic drain Pression maximale d'entrée avec purge des condensats automatique	10 bar		
Portata a 6 bar • Flow rate at 6 bar Débit à 6 bars (87 psi - 600 KPa - 0,6 MPa)	1750 NI/min	4300 NI/min	11000 NI/min
Temperatura max a 10 bar • Maximum temperature at 10 bar Température maximale à 10 bars (145 psi - 1000 kPa - 1 MPa)	+50° C		
Grado di filtrazione Degree of filtration Degré de filtration	20 $\mu$ m A richiesta grado di filtrazione diverso (4 $\mu$ m - 50 $\mu$ m o altro) By request different degree of filtration available (4 $\mu$ m - 50 $\mu$ m or others) Sur demande degré de filtration différent (4 $\mu$ m - 50 $\mu$ m ou autre)		
Fluido • Fluid • Fluide	aria compressa • compressed air • air comprimé		
Posizione di montaggio • Mounting position • Position de montage	verticale • vertical • verticale		